



General Product Instruction

The D3 Quality Control Assay Data File: Internet Download and Installation Instructions

Date: October 2008

Purpose:

This document provides instructions for **Internet download and installation** of the D3 Quality Control Assay data file into the D3 Hematology Analyzer.

Tools:

- A computer with Internet access and a USB port
- A USB thumb drive (1 GB or less).

Read this entire document before starting.

Internet Download

Instructions:

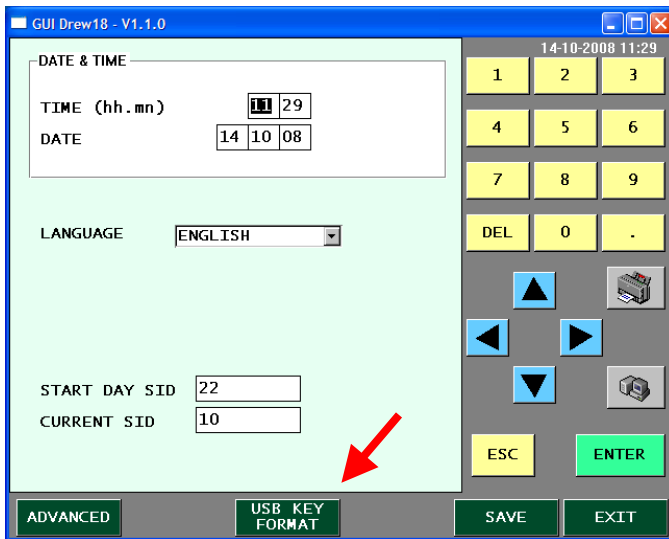
- Log in to the D3.
- Insert the USB thumb drive into the USB port located in the front of the instrument.



- From the Main Menu, select **“Auxiliary”**.
- Press **“USB Key Format”**.

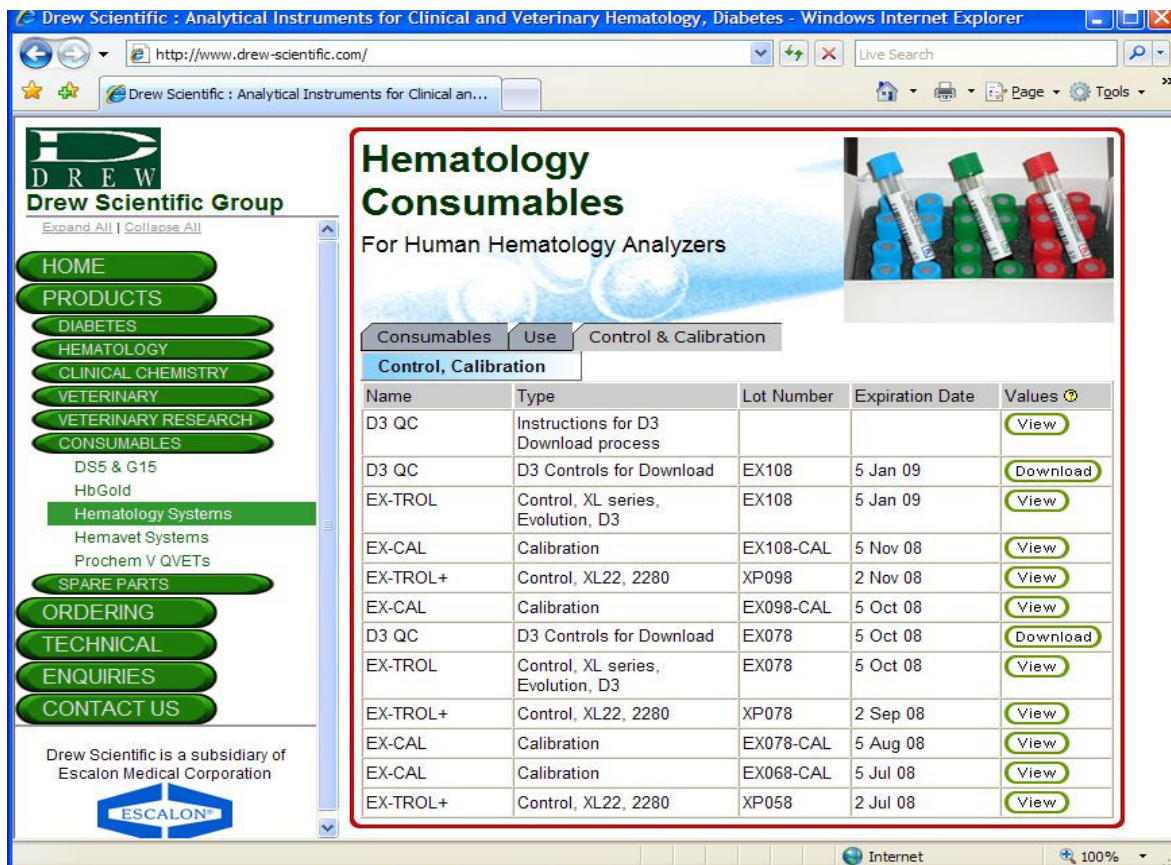
Note: Formatting of the USB drive on the D3 need only be done once.

- Select “Yes” from the pop up window asking “Do you confirm?”.



Note: The light on the USB thumb drive will extinguish when formatting is complete.

- Remove the USB thumb drive from the D3.
- Insert the thumb drive into a computer with Internet access.
- Connect to the Internet.
- Navigate to the website <http://www.drew-scientific.com> .



- Select **Products / Consumables / Hematology Systems** from the left column of the web page.
- Select the **Control and Calibration** tab.
- Place the mouse cursor **over** the **“Download”** icon for the most current D3 control lot number.
- Using the mouse, **left click once** .

Hematology Consumables
For Human Hematology Analyzers

Consumables Use Control & Calibration

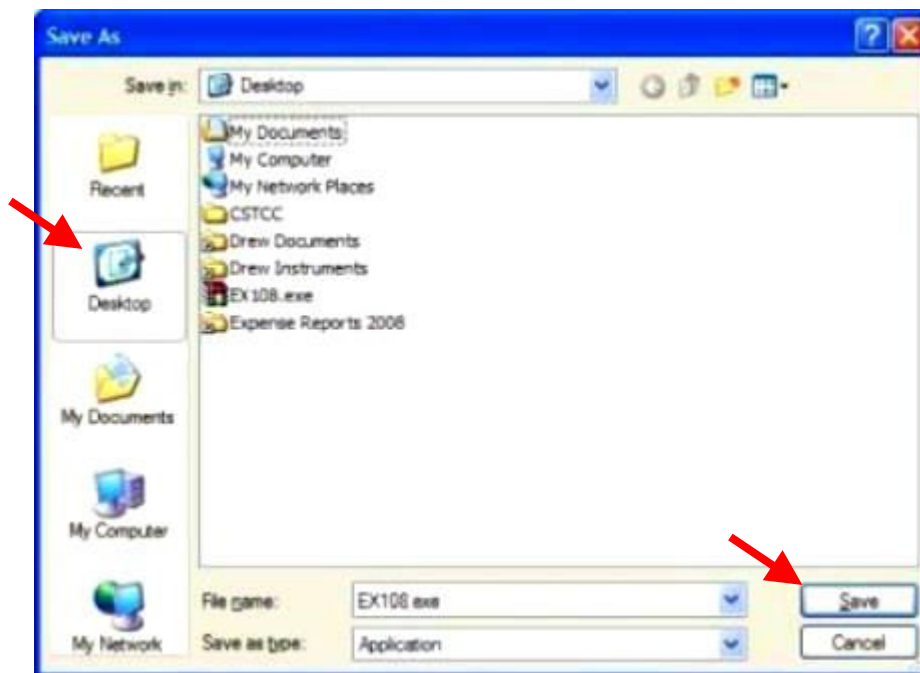
Control, Calibration

Name	Type	Lot Number	Expiration Date	Values
D3 QC	Instructions for D3 Download process			View
D3 QC	D3 Controls for Download	EX108	5 Jan 09	Download
EX-TROL	Control, XL series, Evolution, D3	EX108	5 Jan 09	View
EX-CAL	Calibration	EX108-CAL	5 Nov 08	View
EX-TROL+	Control, XL22, 2280	XP098	2 Nov 08	View
EX-CAL	Calibration	EX098-CAL	5 Oct 08	View
D3 QC	D3 Controls for Download	EX078	5 Oct 08	Download
EX-TROL	Control, XL series, Evolution, D3	EX078	5 Oct 08	View
EX-TROL+	Control, XL22, 2280	XP078	2 Sep 08	View
EX-CAL	Calibration	EX078-CAL	5 Aug 08	View
EX-CAL	Calibration	EX068-CAL	5 Jul 08	View
EX-TROL+	Control, XL22, 2280	XP058	2 Jul 08	View

- Place the mouse cursor **over** the “**Save**” icon from the pop up menu that appears.
- Using the mouse, **left click once**.

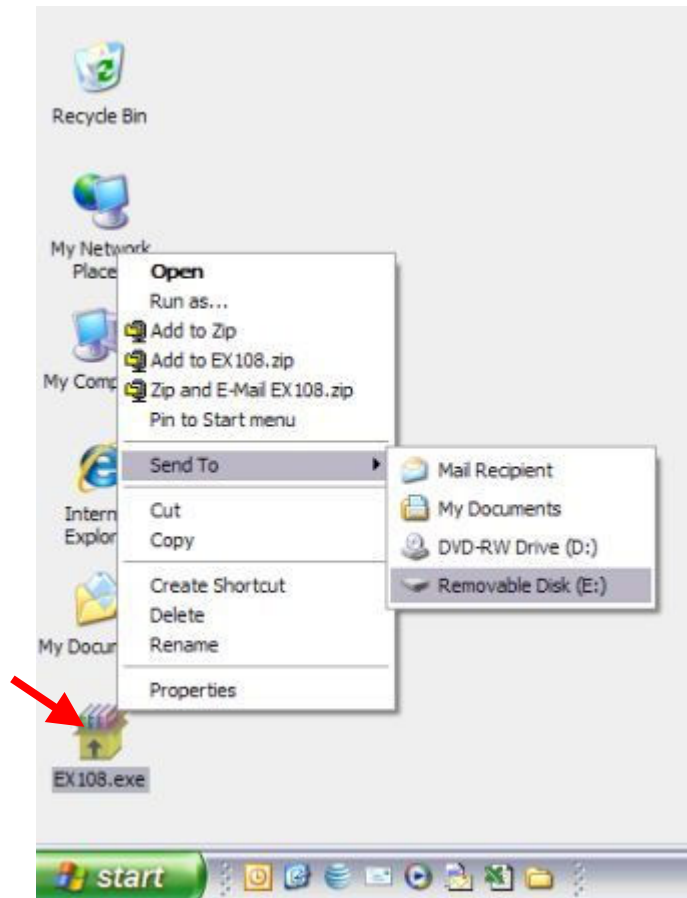


- Place the mouse cursor **over** the “**Desktop**” icon from the “**Save as**” pop up window that appears,
- Using the mouse, **left click once** on the “**Desktop**” Icon then,
- **Left click once** on “**Save**.”



Note: In the “Save as” window, the file name identifies the control lot number followed by an “.exe”, for example “EX108.exe”.

- Close all windows when the download indicates completion. **Do not remove the USB thumb drive from the computer.**
- Locate the downloaded file on the desktop.

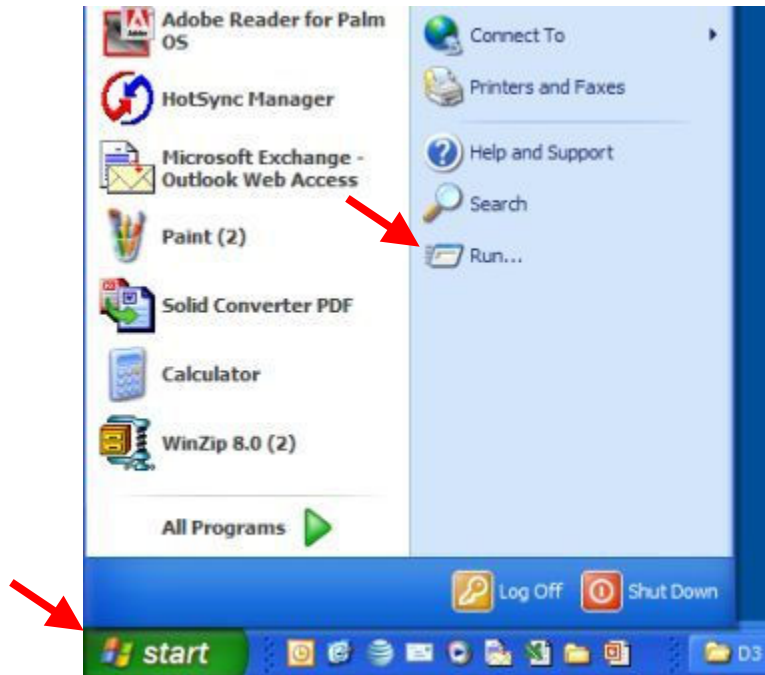


- Place the mouse cursor **over** the downloaded file.
- Using the mouse, **right click once**.
- Place the cursor **over “Send to”** .
- Move the cursor to the right then down and place it **over “Removable Disk (*:)**
Note: The asterisk * represents a letter assigned by the computer.
- Using the mouse, **left click once** on “**Removable Disk (*:)**”.
- A copy of the downloaded file is now automatically sent to the USB thumb drive.
- **Do not remove the USB thumb drive from the computer.**

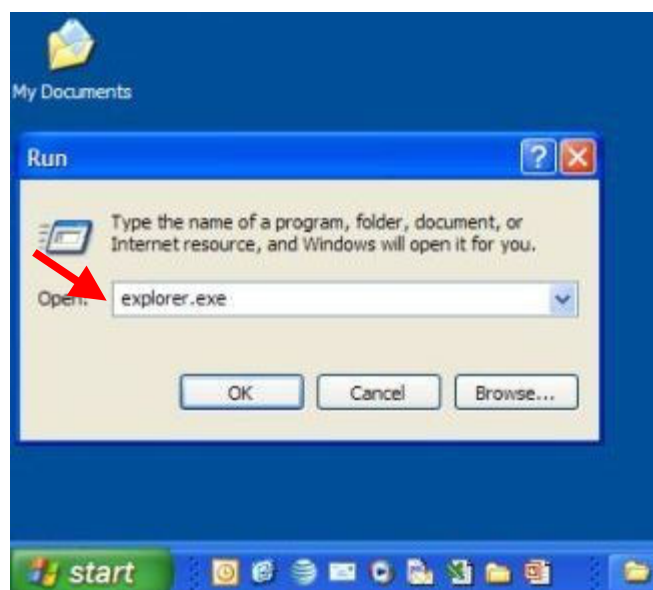
Installation of the D3 Quality Control Assay Data File

Instructions

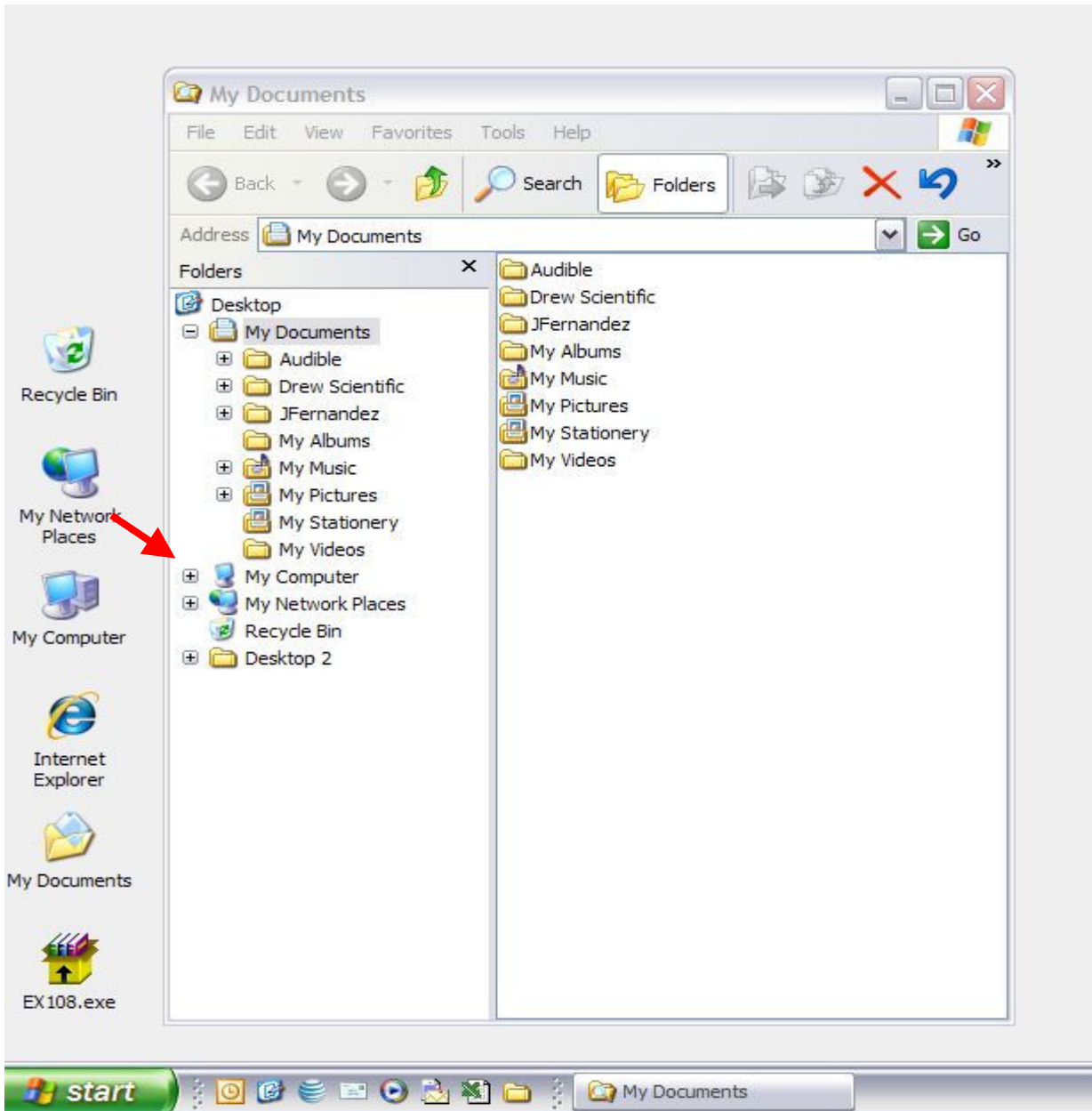
- Left Click **“Start”** then left click **“Run”**.



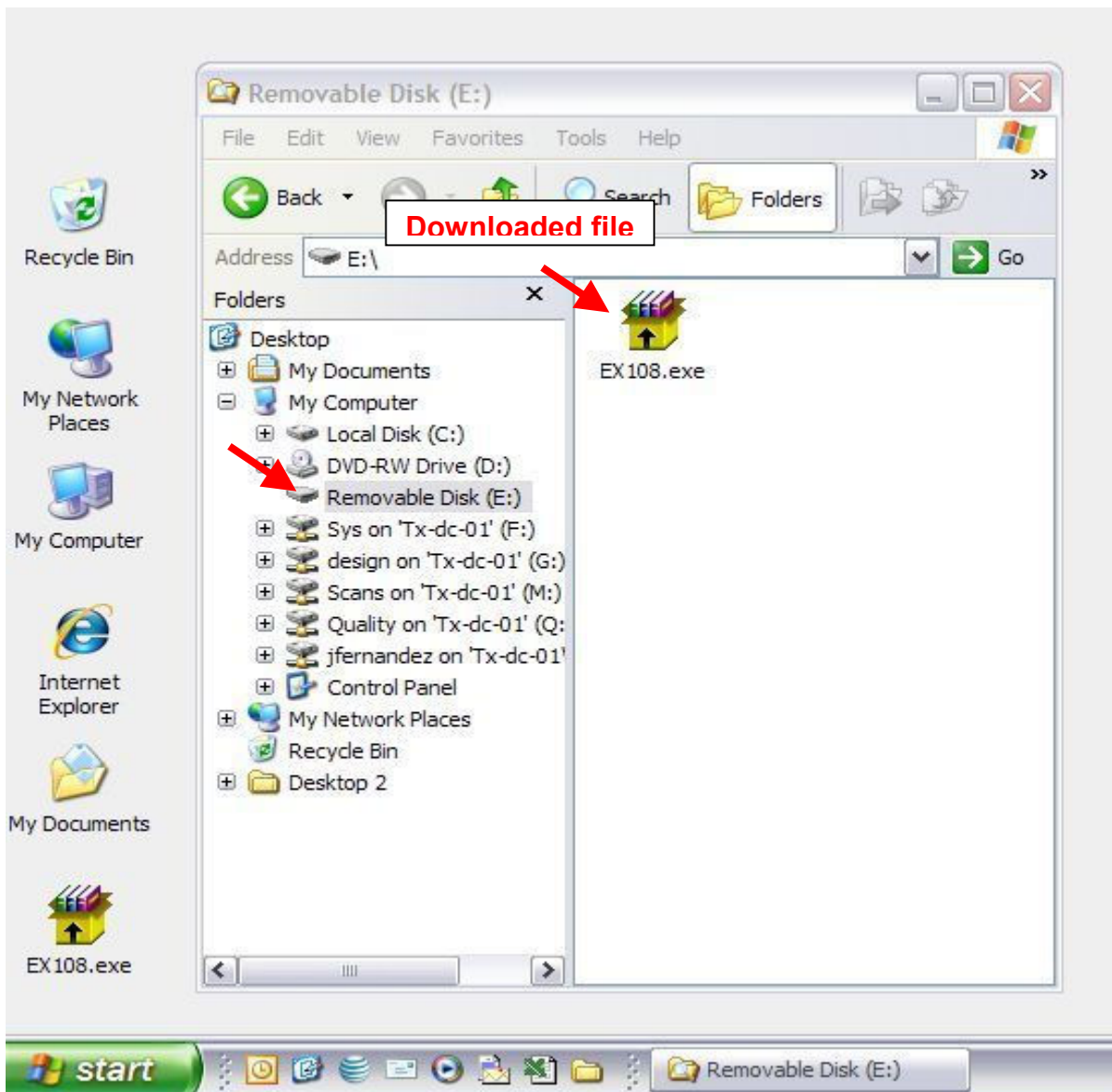
- Type **“explorer.exe”** in the text box.



- Left Click on **“My Computer”**.



- Left click on the “**Removable Disk**” icon then,
- **Double left click** the **downloaded file** icon.



- From the pop up window that appears. press the “**Install**” Button.

Note: Ignore all other instructions in the window.



- **Double left click** the “install. bat” icon in the Removable Disk window. (This will complete file extraction.)



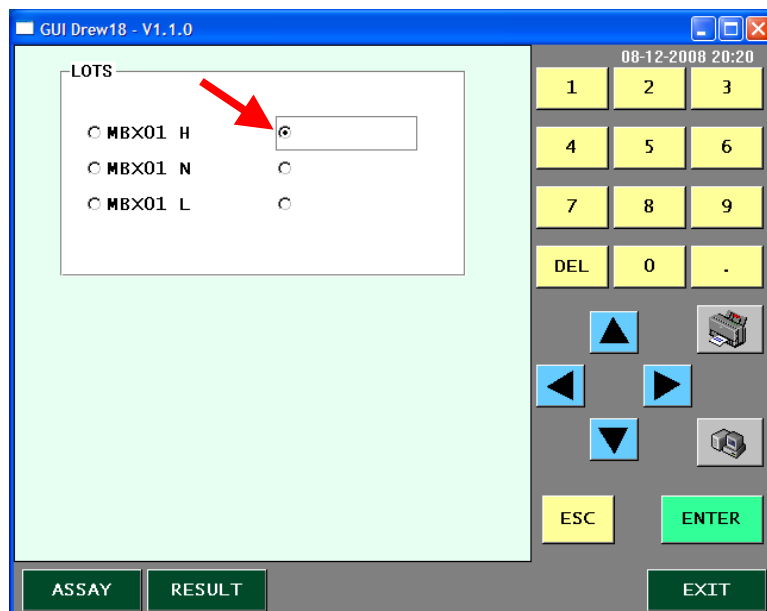
- Close the “**Removable Disk**” window.
- Remove the USB thumb drive from the computer.
- Delete the downloaded QC data file from the computer desktop.
- Insert the USB thumb drive into the USB port located in the front of the D3 instrument.



- Go to the main menu.
- From the main menu, select “**Quality Control**”

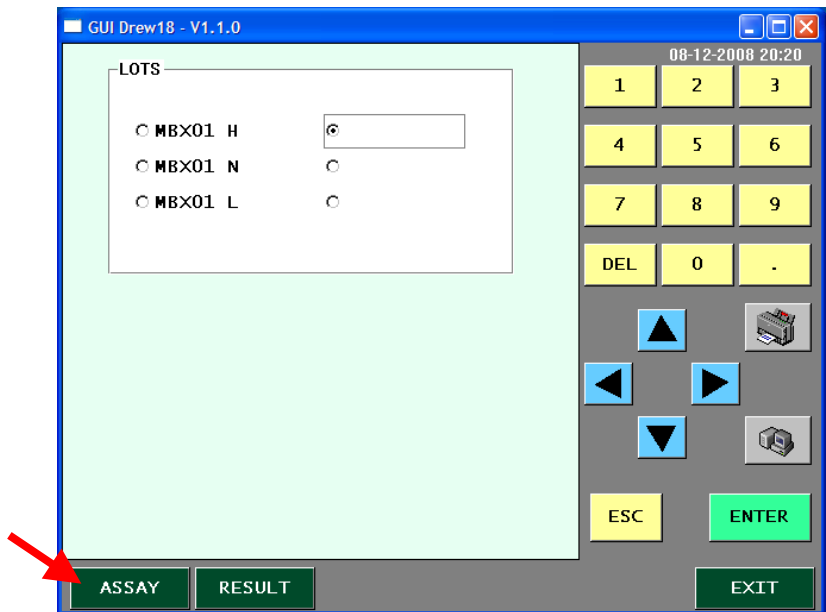
Note: The following steps are repeated for each level of control (L, N, and H).

1. In the “**Lots**” window that appears, select the location where you want to load the first control level.

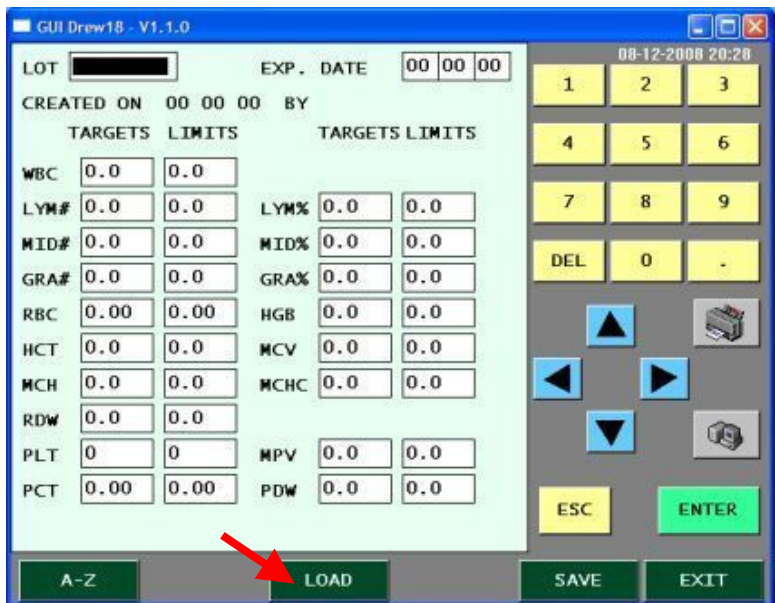


Note: From one of the two columns, select either an unassigned location or a location that has the oldest control expiration date.

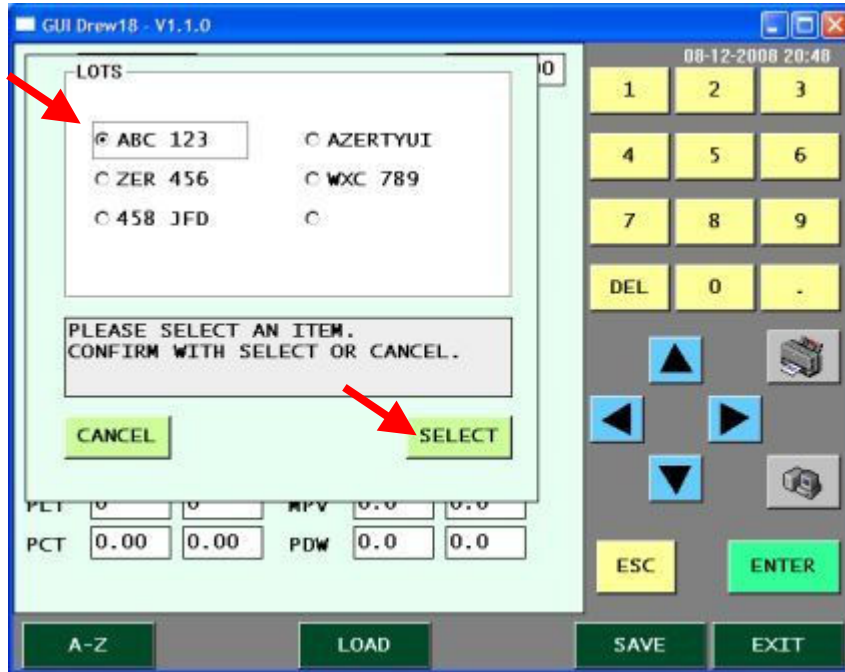
2. Select **“Assay”**.



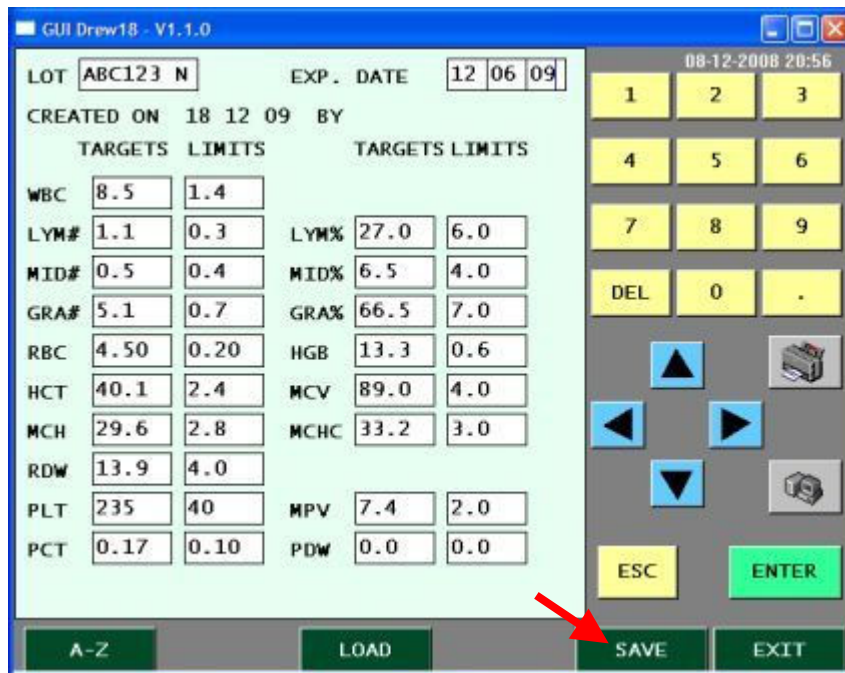
3. Select **“Load”**.



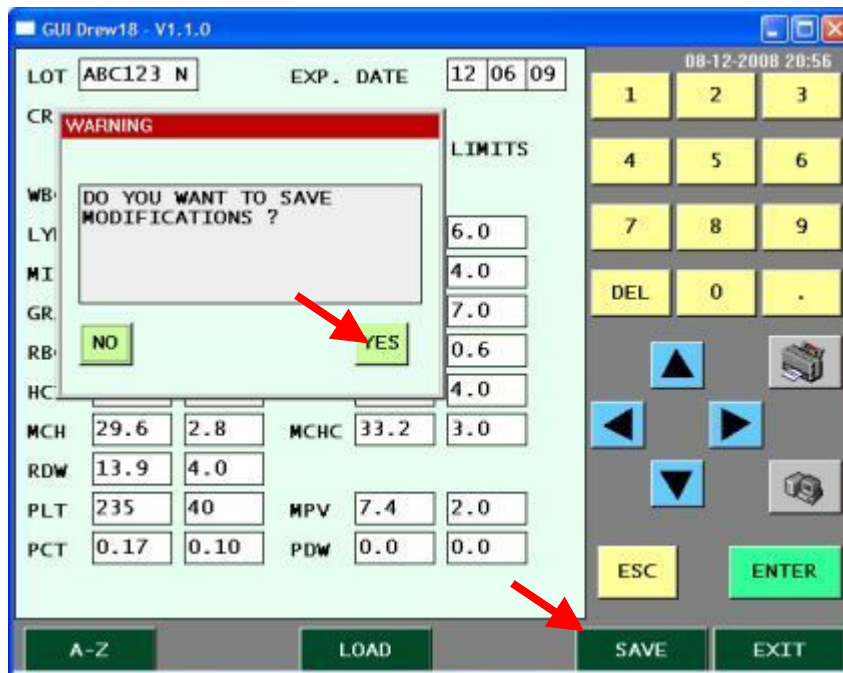
- The downloaded lot number for L, N, and H will appear. Select the lot and control level then press **Select**.



- Select **Save**.



6. From the pop up window, select “Yes” to save modifications then select “Save”



7. Select “Exit”.

8. Go back to **step 1** and **repeat** for each level of control (L, N, and H).

QC assay installation is now complete.